



GREEN.international .products
ABSTURZSICHERUNGS GMBH



.foreword

GREEN – SERVICE AND QUALITY

Green International develops innovative solutions for occupational safety and specialises in the planning, design and implementation of safety concepts and products.

We strive to deliver our products to our customers within 48 hours. Our fall protection products are tested by TÜV far above norm specifications and meet international standards.

GREEN is certified by TÜV with both the ISO 14001:2015 environmental management system and the ISO 9001:2015 quality management system.

GREEN – YOUR TEAM

Peter Lehner and his 12 employees are a small yet dynamic team that has global reach when it comes to innovative solutions for safety at work. We specialise in the planning, design and implementation of customised and efficient safety concepts and products.

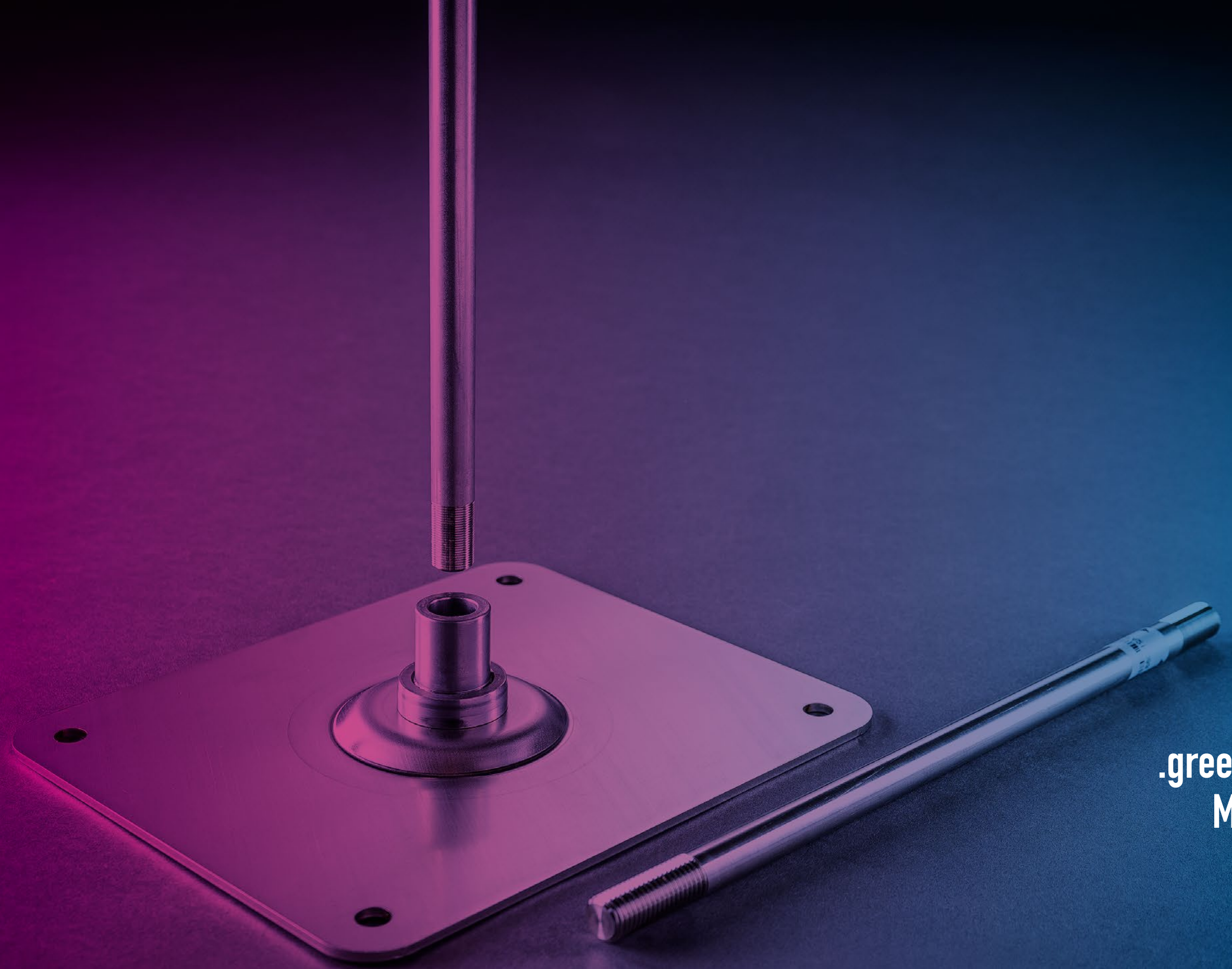
That is how Peter Lehner and his team respond not only to the growing importance of professional safety systems, but also to increasing legal regulations at national and international level. This is because a fall from a heights is still one of the most common causes of fatal accident in the workplace.

Peter Lehner
Managing Director

.overview

Combi modular	5
ONE UNI MODULAR	9
Variant modular	13
Anchor points	21
Cable system components	27
Hook	35
Accessories	39





.green COMBI
MODULAR



**BASE PLATE
COMBI FOR POST DIA. 16 MM**

Material: Stainless steel
Base plate: 210 x 250 mm
Approved for: 4 persons
Application: single anchor point, intermediate cable point

Art. No.	Description
60318200	Base plate Combi Modular 210 x 250 mm



HOLLOW CORE

Fastening set
(4 concrete screws, 4 plastic washers)

Material: Galvanised steel
Concrete quality: at least C30/37 to max. C50/60
and 30 mm flange thickness

Art. No.	Description
60318202	Hollow core CM fastening set



**POST
DIA. 16 MM**

Material: Stainless steel
Diameters: 16 mm

Art. No.	Description
60318300	CM 300 mm
60318400	CM 400 mm
60318500	CM 500 mm
60318600	CM 600 mm
60318700	CM 700 mm



SOLID WOOD

Fastening set (4 wood screws)

Material: Stainless steel
Construction thickness: at least 100 mm

Art. No.	Description
60318203	Solid wood CM fastening set



**ADAPTER PLATE SET
COMBI**

To extend the Combi base plate
for fastening to special trapezoidal supports

Material: Stainless steel

Art. No.	Description
60300030	Combi adapter plate set



TRAPEZOIDAL SUPPORT

Fastening set (6 hex head M10 bolts,
6 washers for M10, 2 clamping bars)

Material: Stainless steel
Material thickness: Steel sheet at least 0.72 mm

Art. No.	Description
60318204	Trapezoidal support CM fastening set



REINFORCED CONCRETE

Fastening set (4 anchor bolts M10)

Material: Stainless steel
Concrete quality: at least C20/25
Concrete thickness: at least 120 mm

Art. No.	Description
60318201	Reinforced concrete CM fastening set

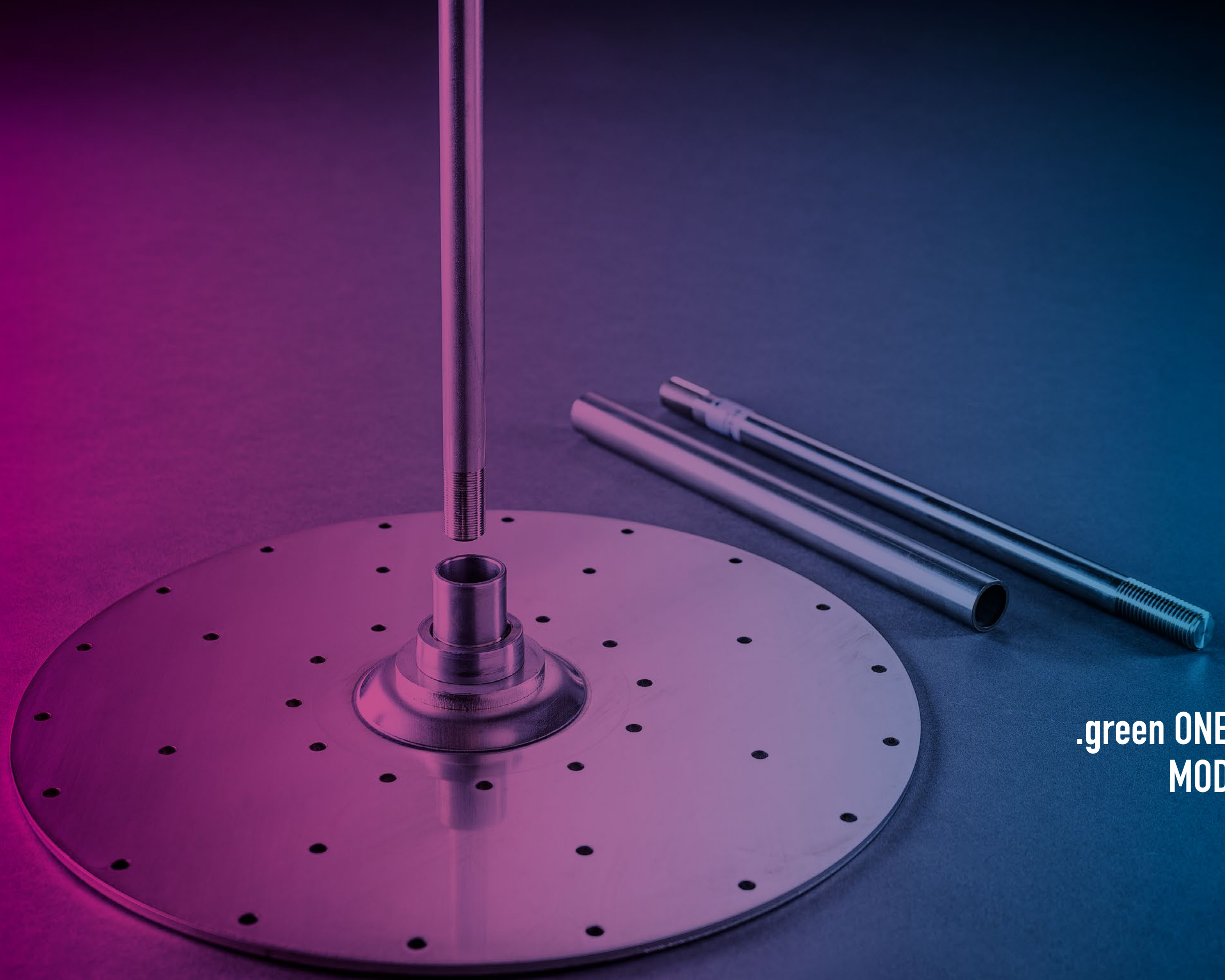


BACKING PLATE

Fastening set
(16 hex head M10 nuts, 8 washers for M10,
2 threaded 1 metre rods, 1 backing plate)

Material: Stainless steel
Construction thickness: Width max. 190 mm for beams
and girders

Art. No.	Description
60318205	Backing plate CM fastening set



.green ONE | UNI
MODULAR



BASE PLATE
FOR ONE POST DIA. 16 MM
UNI SUPPORT TUBE DIA. 22 MM

Material: Stainless steel
Base plate: dia. 330 mm
Approved for: 4 persons
Application Green One (post 16 mm):
single anchor point, intermediate cable point
Application Green Uni (post + support tube):
single anchor point, intermediate cable point,
corner and end support

Art. No.	Description
70400000	One/Uni Modular base plate



POST
DIA. 16 MM

Material: Stainless steel
Diameters: 16 mm

Art. No.	Description
60318300	CM 300 mm
60318400	CM 400 mm
60318500	CM 500 mm
60318600	CM 600 mm
60318700	CM 700 mm



SUPPORT TUBES
DIA. 22 MM

Material: Stainless steel
Diameters: 22 mm

Art. No.	Description
60363000	Uni Modular support tube 300 mm
60364000	Uni Modular support tube 400 mm
60365000	Uni Modular support tube 500 mm
60366000	Uni Modular support tube 600 mm
60367000	Uni Modular support tube 700 mm



FASTENING
ONE / UNI

Fastening set (38 screws 35 mm)

Material: Stainless steel
Base material: Oriented Strand Board at least 18 mm or
raw shuttering at least 22 mm

Art. No.	Description
47010000	Fastening One/Uni 35 mm screw length
47010001	Fastening One/Uni 60 mm screw length

ERIKA



.green VARIANT
MODULAR



BASE PLATE
FOR POST DIA. 26 MM
REINFORCED CONCRETE, SOLID WOOD
STEEP ROOF BAR, BACKING PLATE

Material: Stainless steel
Base plate: 160 x 160 mm
Approved for: 4 persons
Application: single anchor point, intermediate cable point, corner and end support

Art. No.	Description
60319000	Base plate Variant Modular 160x160 mm



POST
DIA. 26 MM

Material: Stainless steel
Diameters: 26 mm
Approved for: 4 persons

Art. No.	Description
60319300	VM 300 mm
60319400	VM 400 mm
60319500	VM 500 mm
60319600	VM 600 mm
60319700	VM 700 mm



REINFORCED CONCRETE

Fastening set (4 anchor bolts M12)

Material: Stainless steel
Concrete quality: at least C20/25
Concrete thickness: at least 140 mm

Art. No.	Description
60319001	Reinforced concrete VM fastening set



SOLID WOOD

Fastening set (8 wood screws 8 x 100 mm, 4 rosette washers)

Material: Stainless steel
Construction thickness: at least 100 mm

Art. No.	Description
60319002	Solid wood VM fastening set



STEEP ROOF BAR

Fastening set (8 wood screws, 4 hex head M12 bolts, 4 hex head M12 lock nuts, 8 washers for M12, 1 steep roof bar)

Material: Galvanised steel
Steep roof bar: 1250 x 200 x 40 mm
Rafter cross-section: at least 80 x 100 mm
Rafter spacing: min. 435 mm, max. 1065 mm

Art. No.	Description
60319003	Steep roof bar VM fastening set

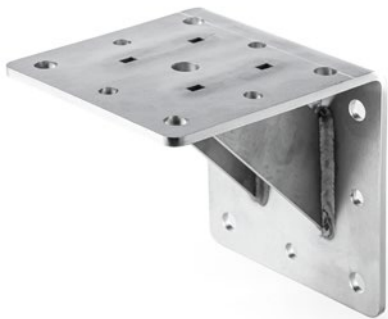


BACKING PLATE

Fastening set (16 hex head M12 nuts, 8 washers for M12, 2 threaded 1 metre rods, 1 backing plate)

Material: Galvanised steel
Construction thickness: Width max. 100 mm for beams and girders

Art. No.	Description
60319004	Backing plate VM fastening set



MOUNTING BRACKET

Expansion for Variant Modular 160 x 160
and Variant-K for side mounting

Material: Stainless steel
Leg length: 173 mm each
Width: 160 mm

Art. No.	Description
10000008	Mounting bracket



**FASTENING SET
MOUNTING BRACKET**

To bolt the mounting bracket to Variant Modular and
Variant-K

4 hex head bolts M12 x 35
8 washers for M12
4 hex lock nuts M12

Art. No.	Description
60319005	Fastening set mounting bracket



**BASE PLATE
FOR POST DIA. 26 MM
BASE PLATE, BACKING PLATE XL**

Material: Stainless steel
Base plate: 370 x 370 mm
Approved for: 4 persons
Application: single anchor point, intermediate cable
point, corner and end support

Art. No.	Description
60319100	Base plate Variant Modular 370 x 370 mm



**POST
DIA. 26 MM**

Material: Stainless steel
Diameters: 26 mm
Approved for: 4 persons

Art. No.	Description
60319300	VM 300 mm
60319400	VM 400 mm
60319500	VM 500 mm
60319600	VM 600 mm
60319700	VM 700 mm



CLAMPING BAR

Fastening set
(4 clamping bars, 8 hex head M12 bolts,
8 washers for M12, 1 adapter plate)

Material: Galvanised steel
Material thickness: Steel sheet at least 0.72 mm

Art. No.	Description
60319101	Clamping bar VM fastening set



BACKING PLATE XL

Fastening set
(16 hex head M12 nuts, 16 washers for M12,
2 threaded 1 metre rods, 1 backing plate)

Material: Galvanised steel
Base plate: 370 x 370 mm
Construction thickness: Width max. 310 mm for beams
and girders

Art. No.	Description
60319101	Backing plate VM fastening set



**BASE PLATE
FOR POST DIA. 26 MM, HOLLOW CORE**

Material: Stainless steel
Base plate: 300 x 300 mm
Approved for: 4 persons
Application: single anchor point, intermediate cable point, corner and end support

Art. No.	Description
60319200	Base plate Variant Modular 300 x 300 mm



**POST
DIA. 26 MM**

Material: Stainless steel
Diameters: 26 mm
Approved for: 4 persons

Art. No.	Description
60319300	VM 300 mm
60319400	VM 400 mm
60319500	VM 500 mm
60319600	VM 600 mm
60319700	VM 700 mm



CONCRETE FASTENERS

Fastening set
(8 concrete screws, 8 plastic washers)

Material: Stainless steel/galvanised steel
Concrete quality: at least C30/37 to max. C50/60
Flange thickness: at least 30 mm

Art. No.	Description
60319201	Concrete fastener VM fastening set



EXTENSIONS

for extending Variant Modular supports

Material: Stainless steel
Diameters: 26 mm
Overall length: max. 700 mm incl. extensions

Art. No.	Description
60319202	VM 100 mm
60319203	VM 200 mm



THREADLOCKER ADHESIVE

ThreadLock ultra strong

10 ml for approx. 60 posts
50 ml for approx. 300 posts

Art. No.	Description
10200001	ThreadLock ultra strong 10 ml
10200002	ThreadLock ultra strong 50 ml



POST PERSUADER

Material: Stainless steel
Socket size: 13 mm

Art. No.	Description
10141	Used to help screw-in posts



.green
ANCHOR POINTS



EXTENSIONS

for extending Combi supports

Material: Stainless steel
Diameters: 20 mm
Overall length: max. 700 mm incl. extensions

Art. No.	Description
60303001	100 mm
60303002	200 mm



CONCRETE SINGLE

not including injection adhesive

Material: Stainless steel
Diameters: 16 mm
Fastening: For grouting into concrete C20/25
Concrete thickness: at least 160 mm
Approved for: 4 persons
Application: single anchor point, intermediate cable point

Art. No.	Description
46130000	300 mm
46150000	500 mm
46160000	600 mm
46170000	700 mm



WOOD SINGLE

Material: Stainless steel
Diameters: 16 mm
Fastening: for screwing into wooden beams at least 140 x 140 mm
Approved for: 2 persons
Application: single anchor point, intermediate cable point

Art. No.	Description
46181030	300 mm
46180000	500 mm



EASY

not including injection adhesive
Material: Stainless steel
Diameters: 16 mm
Fastening: With backing plate through wooden rafters or for grouting into concrete C20/25
Approved for: 4 persons
Application: Single anchor point or intermediate cable point

Art. No.	Description
49521000	125 mm
49522000	200 mm
49523000	300 mm
49524000	400 mm
49525000	500 mm
49526000	600 mm



CLIP 1

For fastening to double standing seam
Material: Stainless steel
Base material: Aluminium 0.7 mm / stainless steel 0.5 mm, copper 0.6 mm / galvanised steel 0.6 mm / titanium zinc 0.7 mm
Approved for: 2 persons
Application: single anchor point, intermediate cable point, roof hook 6

Art. No.	Description
49480100	Green CLIP 1



CLIP 2

For fastening to double standing seam
Material: Stainless steel
Seam width: min. 320 mm, max. 640 mm
Base material: Aluminium 0.7 mm / stainless steel 0.5 mm, copper 0.6 mm / galvanised steel 0.6 mm / titanium zinc 0.7 mm
Approved for: 4 persons
Application: single anchor point, intermediate cable point, end and corner mounting.

Art. No.	Description
49480200	Green CLIP 2



**ROOF HOOK
RH 6**

For fastening to Clip 1 double standing seam

Material: Stainless steel
Fastening: To Clip 1
Approved for: 2 persons

Art. No.	Description
59555400	RH 6 Green



SANDWICH

Including fastener set (butyl tape, 28 seal rivets)

Material: Stainless steel
Bead spacing: 207 to 414 mm.
Fastening: on sandwich panels and trapezoidal supports (steel sheet at least 0.48 mm)
Approved for: 4 persons
Application: single anchor point, intermediate cable point, end and corner mounting

Art. No.	Description
69002000	Green Fix



F-1



F-2

**F-1
F-2**

Including fastening set (4 wood screws)

Material: Stainless steel/aluminium
Support height: 300 mm
Dimensions: Shuttering at least 20 mm thick on rafters at least 80 x 100 mm or directly on rafters at least 100 x 160 mm
Roof pitch: 18° to 48°
Fastening: for mounting on the roof ridge
Approved for: 3 persons
Application: single anchor point, intermediate cable point, end and corner mounting

Art. No.	Description
48652000	Variant F-1 Green
48652002	Variant F-2 Green



**EYEBOLT
STANDARD**

Material: Stainless steel

Art. No.	Description
68910400	Single anchor point eyelet standard



**EYEBOLT
30°**

Material: Stainless steel

Art. No.	Description
68920100	Single anchor point eyelet 30°



EVERGREEN

Load-bearing anchor point for gravel and green fill (weight at least 80 kg/m²)

Material: Stainless steel/PPE
Approved for: 2 persons
Application: single anchor point, intermediate cable point, end and corner support

Art. No.	Description
49004300	Evergreen
49004301	Evergreen lug set end/corner

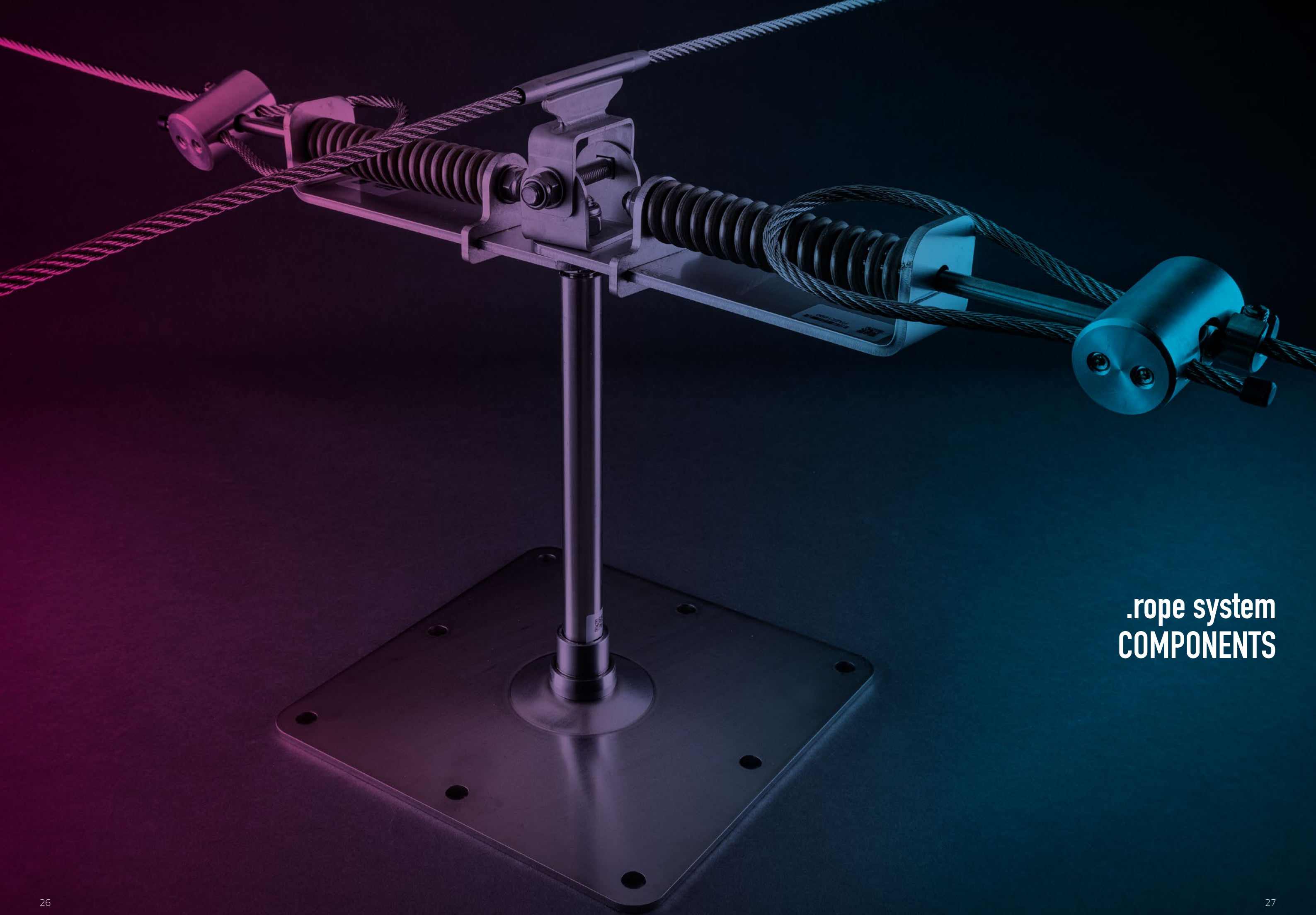


STONEKIT

Supplied without concrete slabs
Load-bearing anchor point

Material: Stainless steel
Payload: Concrete slabs
16 measuring 500 x 500 x 50 mm or
20 measuring 500 x 500 x 40 mm
Approved for: 2 persons
Application: single anchor point, intermediate cable point, end and corner mounting

Art. No.	Description
49003000	Stonekit Green



.rope system
COMPONENTS



**END FITTING SET
FAST END**

With integrated impact absorber, fall indicator clamp and constant pressure spring. End fitting both ends of the system, both ends constant spring-assisted cable tension (1 set = 2 pcs)

Material: Stainless steel / aluminium

Art. No.	Description
68910360	End fitting set Fast End



**DATA TAG GREENLINE
795 C**

To identify the cable system
1 data tag per end fitting set

Art. No.	Description
48500010	Data tag Greenline 795 C



**END FITTING SET
FAST END+**

For straight run cable systems up to 30 metres long with integrated impact absorber, fall indicator clamp and constant pressure spring. End fitting both ends of the system, both ends constant spring-assisted cable tension (1 set = 2 pcs)

Material: Stainless steel / aluminium

Art. No.	Description
68910310	End fitting set Fast End+



**DATA TAG GREENLINE
795 C/E**

To identify the load-bearing system
1 data tag per end fitting set

Art. No.	Description
80720004	Data tag Greenline 795 C/E



STAINLESS STEEL CABLE

Material: Stainless steel (V4A)
Diameters: 8 mm (7 x 7 wires)
Breaking strength: 36 kN

Art. No.	Description
47901011	Stainless steel cable Green



**DATA TAG VARIANT F
795 C**

To identify roof ridge systems
1 data tag per end fitting set

Art. No.	Description
48500021	Data tag Variant F Green



**INTERMEDIATE CABLE POINT
ZH**

Material: Stainless steel
Application: Universal intermediate cable point with 1 mounting point for roof and cladding systems, moves through 180°, can be accessed from both ends, for special applications can be fixed in 5 steps, can be passed over

Art. No.	Description
48910400	Intermediate cable point GZH



**INTERMEDIATE CABLE POINT LONG
ZH-40**

Material: Stainless steel
Application: Universal intermediate cable point with 1 mounting point for roof, cladding and overhead systems flexibly bendable up to 40°, moves through 180°, can be accessed from both ends, for special applications, 5 stage fixing, can be passed over

Art. No.	Description
48991100	Intermediate cable point long GZH 40



**INTERMEDIATE CABLE POINT
ZH-X NOT PASSABLE**

Material: Stainless steel
Application: Not suitable for SDW 1 and SDW 2
Cannot be passed over

Art. No.	Description
48910500	Intermediate cable point GZH X



**CORNER
EH-90**

Material: Stainless steel
Application: 90° corner with 1 mounting point, for an inside or outside corner, as well as for overhead systems.

Art. No.	Description
48911200	Corner GEH 90°



**CORNER
EH-45**

Material: Stainless steel
Application: 45° corner with 1 mounting point, for an inside or outside corner, as well as for overhead systems.

Art. No.	Description
48911300	Corner GEH 45°



FLEX CORNER

Material: Stainless steel
Application: Universal cable pulley with 1 mounting point, for all angles up to 180°, cannot be passed over

Art. No.	Description
48911600	Cable pulley



**CLADDING BRACKET
FEH-1**

not including injection adhesive
For retaining the end fitting against side tension

Material: Stainless steel

Art. No.	Description
48913000	Cladding bracket FEH 1 Green



**CLADDING BRACKET
FEH-2**

not including injection adhesive
For retaining the end fitting against direct tension (A1)

Material: Stainless steel

Art. No.	Description
48913001	Cladding bracket FEH 2 Green



**CORNER CLADDING BRACKET
FKS-90**

Cladding corner set (prefabricated 90° tube,
fastening 2 x M16)
not including injection adhesive

Material: Stainless steel
Fastening: grouting into concrete C20/25

Art. No.	Description
48911500	Corner cladding bracket FKS-90



**STRAIGHT CLADDING BRACKET
FKS-90**

Cladding set
(1 m freely bendable, straight tube, mounting 2 x M16)
not including injection adhesive

Material: Stainless steel
Fastening: grouting into concrete C20/25

Art. No.	Description
48911510	Corner cladding bracket FKS-90



**FKS-90
STRAIGHT TUBE**

1 m freely bendable straight tube

Material: Stainless steel

Art. No.	Description
10021	FKS-90 tube straight



**FKS-90
TUBE 90°**

prefabricated, 90° tube

Material: Stainless steel

Art. No.	Description
10020	FKS-90 tube 90°



MANDREL SET

for expanding the tube ends for cladding corner brackets

Material: Stainless steel

Art. No.	Description
4602	Mandrel set



.Hook



**HOOK
RH 2**

Fastening kit included
(2 wood screws, 2 rosette washers)
Material: Steel galvanised and powder coated
Base plate: several rows of holes
Fastening: using battens and shuttering on rafters
at least 80 x 100 mm
Approved for: 2 persons

Art. No.	Description
49550100	1 RH 2 galvanised
49551100	1 RH 2 brick red
49552100	1 RH 2 anthracite
49553100	1 RH 2 brown
49554100	1 RH 2 steel galvanised and powder coated or stainless steel



**HOOK
RH 3**

Fastening kit included
(2 wood screws, 2 rosette washers)
Material: Stainless steel
Base plate: several rows of holes
Fastening: using battens and shuttering on rafters
at least 60 x 115 mm
Approved for: 2 persons

Art. No.	Description
49555200	1 RH 3 stainless steel



**HOOK
RH 4**

Fastening kit included
(2 wood screws, 2 rosette washers)
Material: Stainless steel
Base plate: single row of holes
Fastening: using battens and shuttering on rafters
at least 60 x 115 mm
Approved for: 2 persons

Art. No.	Description
49555100	1 RH 4 stainless steel



**HOOK
RH 5 (BEAVER TAIL)**

Fastening kit included
(2 wood screws, 2 rosette washers)
Material: Stainless steel
Base plate: several rows of holes
Fastening: battens at least 24 x 48 mm
rafters at least 60 x 110 mm
Approved for: 2 persons

Art. No.	Description
49555300	1 RH 5 stainless steel



LOOP

Roof loop for fastening on wood
Fastening kit included
(4 flat head wood screws)
Material: Stainless steel
Cable: 6 mm
Fastening: with 20 mm shuttering on rafters
at least 80 x 80 mm or directly
on rafters at least 100 x 120 mm
Approved for: 2 persons

Art. No.	Description
60303600	LOOP

LEOPOLD



.green
ACCESSORIES



GREENRUNNER 01

Movable anchor point for 1 person to be used for the Greenline pass-over horizontal cable safety system

Material: High strength brass alloy

Art. No.	Description
48901010	Greenrunner 01



GREENRUNNER 03

Movable anchor point for 1 person to be used for the Greenline pass-over horizontal cable safety system when mounted overhead (overhead rollers, suitable for corners)

Material: Stainless steel

Art. No.	Description
68901020	Greenrunner 03



TEMPORARY LIFELINE

Connecting rope with snap hook and rope shortener and 2 free running snap hooks, length 23 m
EN 795 C

Art. No.	Description
42939010	Temporary lifeline - 23m



SNAP HOOK

Accessory Easy Access

Material: Stainless steel
Breaking strength: 25 kN
Approved for: 1 person
EN 362:2004 B

Art. No.	Description
61300100	Snap hook



EASY ACCESS

Access rope for safe access to the roof without snap hooks

Material: Stainless steel
Diameters: 8 mm (7 x 7 wires)
Approved for: up to 4 persons
EN 354:2010
EN 795:2012 B
CEN/TS 16415:2013 B

Art. No.	Description
61301500	Easy Access 150 cm
61302000	Easy Access 200 cm
61302500	Easy Access 250 cm
61303000	Easy Access 300 cm
61303500	Easy Access 350 cm
61304000	Easy Access 400 cm
61304500	Easy Access 450 cm
61305000	Easy Access 500 cm
	Other lengths available on request



PPA SET 1 GREEN

- | | |
|---|---|
| 1 | Safety harness EN361/358 |
| 1 | moving fall arrester incl. shock absorber and 15 m rope (EN353-2) |
| 1 | Snap hook |
| 1 | Transport bag 60 x 30 cm |

Art. No.	Description
42938010	PPE set 1 Green (15 m)



PPA SET 2 TO 5 GREEN

- | | |
|---|--|
| 1 | Safety harness EN361 |
| 1 | moving fall arrester incl. shock absorber and rope (EN353-2) |
| 1 | Snap hook |
| 1 | Transport bag 60 x 30 cm |

Art. No.	Description
42938020	PPE set 2 Green (10 m)
42938030	PPE set 3 Green (5 m)
42938040	PPE set 4 Green (15 m)
42938050	PPE set 5 Green (20 m)



QUICK STOP LANYARD

for horizontal and vertical use
Webbing or cable
High strength plastic housing

Art. No.	Description
46006303	Quick stop lanyard webbing 3.5 m
46006350	Quick stop lanyard webbing 6.0 m
46006300	Quick stop lanyard webbing 12.0 m
46003400	Quick stop lanyard cable 3.5 m
46006330	Quick stop lanyard cable 7.0 m
46003200	Quick stop lanyard cable 10.0 m



PPA STORAGE CABINET
SAFETY BELT BOX

With door and lock for wall mounting
(without contents) 30 x 60 x 20 cm
for outdoor use

Material: Stainless steel

Art. No.	Description
42883000	ppa storage cabinet



WARNING STICKER

Art. No.	Description
42883200	Warning sticker



LIGHTENING CONDUCTOR LUG

For lightning conductor rods 16 mm
170 x 40 x 8 mm

Art. No.	Description
88207006	Lightening conductor lug



PARALLEL CABLE TENSION CLAMP
CABLE HOLDER

Art. No.	Description
98510260	Parallel cable tension clamp



CABLE SHEARS

Art. No.	Description
98513000	Cable shears red 14 mm



CHAIN HOIST

Chain hoist up to 250 kg

Art. No.	Description
98510250	Chain hoist 250 kg (3 m)



INJECTION ADHESIVE

Art. No.	Description
47905003	Injection adhesive Multifix USF 280 ml



STEPPED DRILL BIT

dia. 8-30 mm

Art. No.	Description
4601	Stepped drill bit



THERMAL INSULATION COVER
GREEN COMBI

with internal insulation for all Combi supports

Art. No.	Description
46080000	Thermal insulation cover Combi



THERMAL INSULATION COVER
GREEN VARIANT

with internal insulation for all Variant supports

Art. No.	Description
48501030	Thermal insulation cover Variant



SHRINK-FIT TUBING

Length: 10 cm

Art. No.	Description
80500000	Shrink-fit tubing Combi/One
80600000	Shrink-fit tubing Variant Modular/Uni
80700000	Shrink-fit tubing Variant-K



THERMAL
ISOLATION

For placing between base plate and substrate

Low thermal conductivity:	0.06 W/mK
High compressive strength:	10 N/mm²

Combi / Combi Modular / Variant Modular 160 x 160 /
Variant Modular 370 x 370 / Variant-K
4 pcs each

Variant Modular 300 x 300
8 pcs each

Art. No.	Description
4608001	Thermal isolation



SEALING SLEEVES

with shrink-fit tubing for all supports

Art. No.	Description
46101600	Bitumen sealing sleeve with grit (Combi, One) 16mm
46102200	Bitumen sealing sleeve with grit (Variant Modular, Uni Modular, Uni) 22. 26mm
46105000	Bitumen sealing sleeve with grit (Variant-K) 50mm
46101601	Bitumen sealing sleeve slate effect (Combi, One) 16mm
46102201	Bitumen sealing sleeve slate effect (Variant Modular, Uni Modular, Uni) 22mm, 26mm
46103001	Bitumen sealing sleeve slate effect (Variant-K) 50mm
46201600	TPO-PP sealing sleeve (Combi, One) 16m
46202200	TPO-PP sealing sleeve (Variant Modular, Uni Modular, Uni) 22mm, 26mm
46205000	TPO-PP sealing sleeve (Variant-K) 50m
46301600	PVC sealing sleeve (Combi, One) 16mm
46302200	PVC sealing sleeve (Variant Modular, Uni Modular, Uni) 22mm, 26mm
46305000	PVC sealing sleeve (Variant-K) 50mm



GREEN.international
ABSTURZSICHERUNGS GMBH

.green
INNOVATION

We have 12 years of experience in the development, planning and construction of fall protection systems. That is why we can develop fast solutions for customer-specific applications.

Due to the exclusive production in Austria and a newly implemented batch tracing system, we can accurately record each product and its manufacturing process.

GREEN.international

ABSTURZSICHERUNGS GMBH

Fabriksplatz 1
4662 Steyrermühl
Tel.: +43 7613 324 98
Fax: +43 7613 324 98-16
office@green-gmbh.at

www.green-gmbh.at

V-02.02.23

